



2 Nicholas Road

, Liverpool, L23 6TS

£120,000

This TWO BEDROOM ground floor apartment with access to the communal gardens is a must for any buyer over the age of 55 wanting a retirement development. Having been completely re-decorated to a high standard including new carpets, a kitchen overhaul and a new contemporary shower room, catch this one whilst you can.

Set within a leafy development yet is a stone's throw to Crosby Beach, Crosby train station and local shops, the location is ideal for any buyer wanting a central location.

On entering the private hallway is a spacious lounge/diner with double glazed doors leading to a picturesque communal garden with patio areas. A modern style kitchen, two spacious bedrooms - both with fitted wardrobes and a contemporary shower room.

The communal areas include a lounge/kitchen area where both residents and guests can use to socialise in, a laundry room and communal gardens. The property has been installed with UPVC double glazing and a central heating system.

- Two Bedroom Ground Floor Apartment
- Over 55's Retirement Complex
- Modern Kitchen And Bathroom
- Available With No Onward Chain
- Communal Laundry, Lounge And Gardens

Viewing

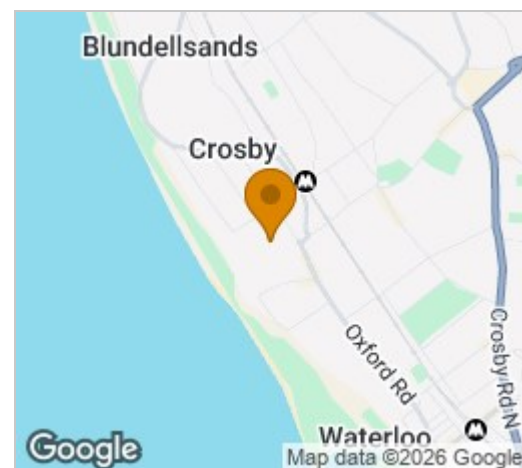
Please contact our Michael Moon Office on 0151 924 1000 if you wish to arrange a viewing appointment for this property or require further information.



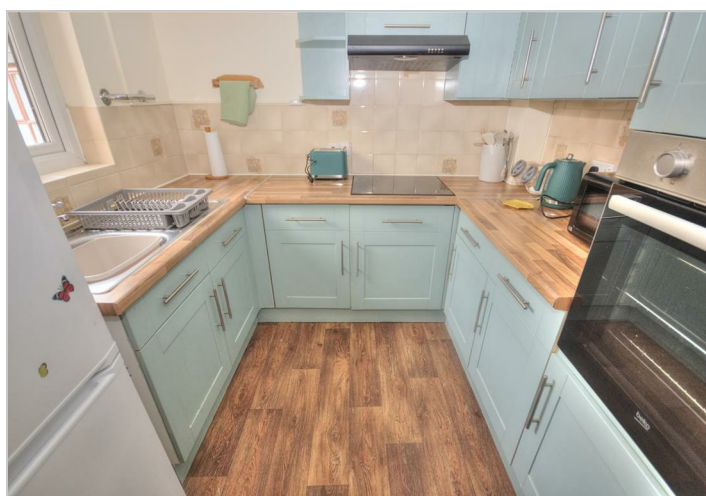
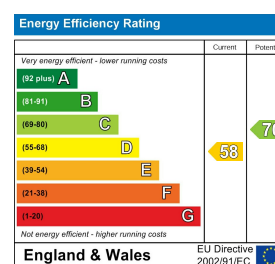
Floor Plan



Area Map



Energy Efficiency Graph



These particulars, whilst believed to be accurate are set out as a general outline only for guidance and do not constitute any part of an offer or contract. Intending purchasers should not rely on them as statements of representation of fact, but must satisfy themselves by inspection or otherwise as to their accuracy. No person in this firm's employment has the authority to make or give any representation or warranty in respect of the property.

54 Liverpool Road, Liverpool, Merseyside, L23 5SG
Tel: 0151 924 1000 Email: info@michaelmoon.co.uk www.michaelmoon.co.uk